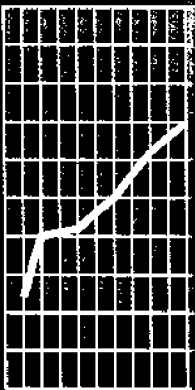


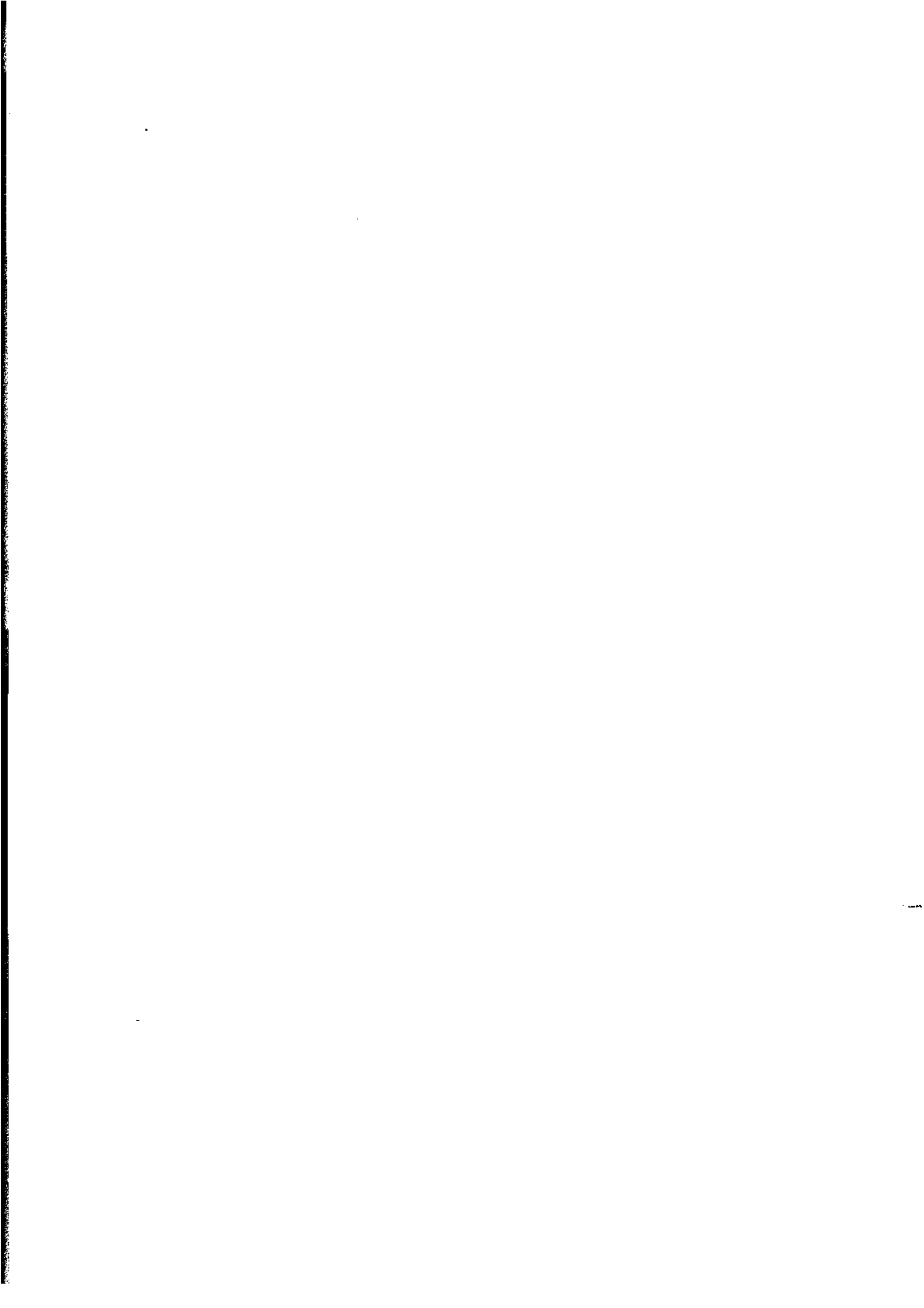


May 1996

Monthly Summary of Statistics Western Australia



ABS Catalogue No. 1305.5



CONTENTS

	<i>Table</i>	<i>Page</i>
POPULATION	1.1 Estimated Resident Population	1
	1.2 Components of Population Change	2
	1.3 Registrations of Births, Deaths, Marriages and Divorces	3
	1.4 Rates of Birth, Deaths, Marriages and Divorces	3
TOURISM	2.1 Permanent and Long Term Arrivals and Departures	4
	2.2 Short Term Overseas Arrivals and Departures	5
	2.3 Short Term Arrivals by Air: Last Six Months	5
	2.4 Short Term Arrivals: Purpose of Journey	6
	2.5 Short Term Departures: Last Six Quarters	7
	2.6 Short Term Departures: Purpose of Journey	8
	2.7 Tourist Accommodation	9
EMPLOYMENT	3.1 Labour Force Status: Seasonally Adjusted	10
	3.2 Labour Force Status: Trends	11
	3.3 Employed Wage and Salary Earners by Industry and Sector	12
	3.4 Average Weekly Earnings of Employees	13
	3.5 Industrial Disputes Causing Stoppage at Work	14
RETAIL	4.1 Monthly Retail Turnover: Original Estimates	15
	4.2 Consumer Price Index: Perth	16
CONSTRUCTION	5.1 New Residential Building Approved	17
	5.2 New Non-Residential Building Approved	18
	5.3 Selected Housing Price Indexes: Perth	19
	5.4 Price Indexes of Materials Used in Building Other Than House Building: Perth	20
PRODUCTION	6.1 Livestock Slaughtered	21
	6.2 Meat Produced	21
	6.3 Wool Receipts	22
	6.4 Energy Production	22
	6.5 Mineral Exploration: Expenditure by Type of Mineral Sought	23
	6.6 Mineral Production	23
OVERSEAS TRADE	7.1 Imports by Selected Divisions	24
	7.2 Exports by Selected Divisions	25
TRANSPORT	8.1 New Motor Vehicle Registrations	26
	8.2 Vehicle Registration Statistics	26
FINANCE	9.1 Private New Capital Expenditure by Selected Industry Groups	27
	9.2 State Final Demand and Production Account	27
STATISTICAL SUMMARY	10.1 Key State Indicators	28

INQUIRIES

- PHONE ■ For more information about these statistics and of related unpublished statistics, contact Information Services on (09) 360 5140
- MAIL ■ Write to or visit Information Services, Bureau of Statistics,
Level 16, Exchange Plaza Building, 2 The Esplanade, Perth WA 6000
- ELECTRONIC ■ On Elderlink key *620#
■ On Dial-A-Statistic phone 0055 86 400
-

**AUSTRALIAN BUREAU OF STATISTICS
WESTERN AUSTRALIA
MAY 1996 RELEASES**

<i>Catalogue Number</i>	<i>Publication Title</i>	<i>Release Date</i>
6410.5	Price Index of Western Australian Hardwoods, March 1996	3 May 1996
8731.5	Building Approvals, Western Australia, March 1996	6 May 1996
8741.5	Dwelling Unit Commencements, Western Australia, February 1996	8 May 1996
1305.5	Monthly Summary of Statistics, Western Australia, May 1996	31 May 1996
8731.5	Building Approvals, Western Australia, April 1996	31 May 1996

**SYMBOLS AND OTHER
USAGES**

The following symbols, where shown in columns of figures or elsewhere in tables, mean:

- n.a. not available
- n.e.i. not elsewhere included
- n.p. not available for separate publication (but included in totals where applicable)
- n.y.a. not yet available
- nil or rounded to zero
- .. not applicable
- * Subject to sampling variability too high for most practical purposes.
- p preliminary - figure or series subject to revision
- r figure or series revised since previous issue
- break in continuity of series (where drawn between two consecutive figures or columns)

ROUNDING FIGURES

Where figures have been rounded, discrepancies may occur between sums of the component items and totals.

**P.C. Kelly
Deputy Commonwealth Statistician
and Government Statistician
for Western Australia**

Analysis of Table 1.1

In the September quarter 1995, Western Australia's population grew by 8,400 persons to 1,740,100. This is equivalent to an annual rate of population growth of 1.93%.

In the twelve months to 30 September 1995, the population grew from 1,709,000 to 1,740,100, an increase of 31,100 or 1.82%.

At 30 September 1995, there were 873,900 males and 866,200 females resident in Western Australia, a difference of 7,700 more males. Twelve months prior, there was a difference of 8,000 more males. The trend indicates a narrowing in the gap between the sexes.

1.1 ESTIMATED RESIDENT POPULATION

Period	At end of period			Mean Population
	Males	Females	Persons ¹	
			000	
Financial years				
1992-93	842.4	833.9	1 676.3	1 667.4
1993-94	854.6	846.4	1 701.1	1 688.5
1994-95p	869.7	862.0	1 731.7	1 716.2
Calendar years				
1992	837.7	829.1	1 666.7	1 657.9
1993	847.9	839.5	1 687.4	1 677.1
1994 p	861.1	853.3	1 714.4	1 702.4
Quarters				
Jun 94	854.6	846.4	1 701.1	..
Sep 94 p	858.5	850.5	1 709.0	..
Dec 94 p	861.1	853.3	1 714.4	..
Mar 95 p	866.1	858.2	1 724.2	..
Jun 95 p	869.7	862.0	1 731.7	..
Sep 95 p	873.9	866.2	1 740.1	..

¹ All estimates have been finalised using 1991 Census results
Reference: Australian Demographic Statistics (3101.0)

Analysis of Table 1.2

In the September quarter 1995 the total increase in population was 8,300. This was 800 or 11% more than the increase in the previous quarter and 300 or 4% more than the September quarter 1994. Between June and September 1995 quarters, net estimated overseas migration increased more than the other components fell.

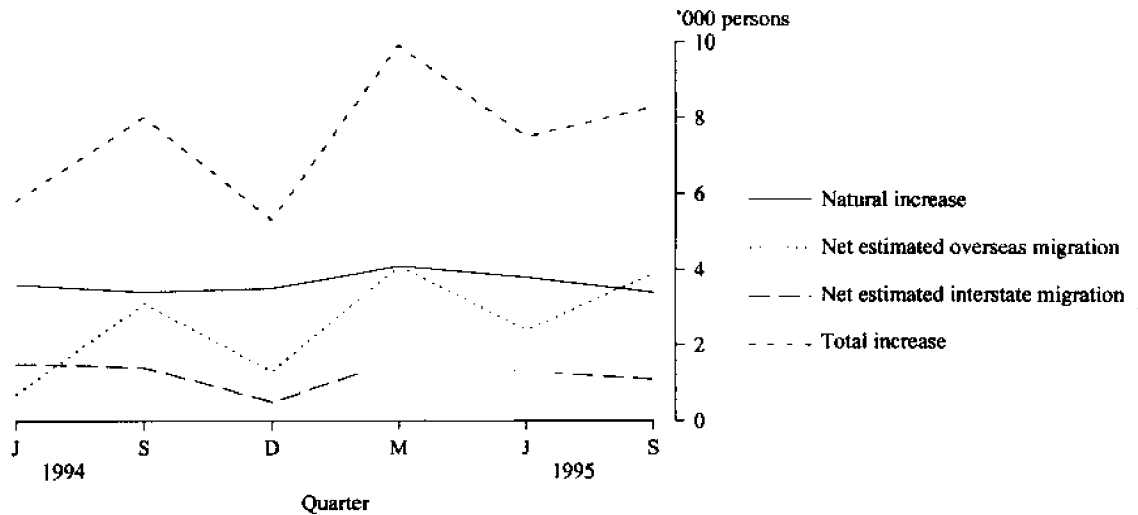
It appears likely that the increase in population for the calendar year 1995 will exceed the increase of 1994. After 9 months of 1995 the increase has totalled 25,700 compared to 21,600 for the same period of 1994 and a total of 26,900 for the full year.

1.2 COMPONENTS OF POPULATION CHANGE

Period	Natural increase	Net estimated overseas migration ¹	Net estimated interstate migration	Total increase
('000)				
Financial years				
1992-93	14.7	4.6	-0.3	19.0
1993-94	14.3	6.7	3.7	24.7
1994-95 p	14.8	11.0	4.9	30.7
Calendar years				
1992	14.9	5.7	-0.8	19.8
1993	14.4	5.5	0.6	20.5
1994 p	14.4	8.1	4.5	26.9
Quarters				
Jun 94	3.6	0.7	1.5	5.8
Sep 94 p	3.4	3.1	1.4	8.0
Dec 94 p	3.5	1.3	0.5	5.3
Mar 95 p	4.1	4.1	1.6	9.9
Jun 95 p	3.8	2.4	1.3	7.5
Sep 95 p	3.4	3.9	1.1	8.3

¹ Includes an adjustment for 'category jumping'

Reference: Australian Demographic Statistics (3101.0)

COMPONENTS OF POPULATION CHANGE
WESTERN AUSTRALIA

Analysis of Table 1.3

There was a rise of 320 deaths in September quarter 1995 from June quarter 1995. However, the number of marriages dropped sharply by 843 from June quarter 1995, repeating the pattern that occurred in 1994.

The number of live births and infant deaths in September quarter 1995 were similar to the previous quarter whilst divorces rose slightly to reflect a figure very similar to September quarter 1994.

1.3 REGISTRATION OF BIRTHS, DEATHS, MARRIAGES AND DIVORCES

Period	Live births	Infant deaths	Total deaths	Marriages	Divorces
Financial years					
1992-93	25 080	147	9 998	10 214	4 385
1993-94	25 309	148	10 522	10 316	4 934
1994-95 p	25 018	137	10 261	10 381	4 930
Calendar years					
1992	25 051	171	9 902	10 118	4 540
1993	25 079	143	10 318	10 382	4 654
1994 r	25 124	137	10 295	10 366	5 024
Quarters					
Jun 94	6 446	39	2 519	2 486	1 283
Sep 94	6 257	38	2 812	1 462	1 333
Dec 94	6 000	29	2 537	3 305	1 358
Mar 95 p	6 412	37	2 314	3 247	1 081
Jun 95 p	6 349	33	2 598	2 367	1 158
Sep 95 p	6 311	29	2 918	1 524	1 332

Reference: Australian Demographic Statistics (3101.0)

Analysis of Table 1.4

Rates for marriages in September quarter 1995 dropped sharply from June quarter 1995, reflecting the corresponding fall in the number of marriages as occurred in 1994.

The rates for live births and infant deaths dropped slightly in September quarter 1995 from June quarter, but increased slightly for deaths reflecting the higher number of deaths.

The divorce rate for September quarter 1995 rose more highly from the preceding quarter than it did in 1994, but was still below the 1994 figure.

For more information regarding tables on Vital statistics and Overseas Arrivals and Departures, please contact Mike Joske on (09) 360 5276.

1.4 RATES OF BIRTHS, DEATHS, MARRIAGES AND DIVORCES

Period	Live births ¹	Infant deaths ²	Total deaths ¹	Marriages ¹	Divorces ¹
Financial years					
1992-93	15.04	5.86	5.99	6.13	2.63
1993-94	14.99	5.85	6.23	6.11	2.92
1994-95 p	14.58	5.48	5.98	6.05	2.87
Calendar years					
1992	15.11	6.83	5.97	6.10	2.74
1993	14.95	5.70	6.15	6.19	2.78
1994 p	14.76	5.45	6.05	6.09	2.95
Quarters					
Jun 94	15.18	6.05	5.93	5.86	3.02
Sep 94	14.68	6.07	6.60	3.43	3.13
Dec 94	14.02	4.83	5.93	7.72	3.17
Mar 95 p	14.92	5.77	5.38	7.55	2.51
Jun 95 p	14.70	5.20	6.01	5.48	2.68
Sep 95 p	14.54	4.60	6.72	3.51	3.07

¹ For financial and calendar years the rate is per '000 mean resident population. For quarters, the mean is averaged between the previous and current quarterly population.

² Infant deaths per 1,000 live births.

Reference: Australian Demographic Statistics (3101.0)

Analysis of Table 2.1

Total arrivals in the month of February 1996 increased by 12,190 or 23% compared with February 1995.

The total of 2,530 long term overseas visitor arrivals in February 1996 was the highest recorded over the last 15 months.

Short term departures of Australian residents in February 1996 was the lowest recorded in the last 15 months.

The total of 55,030 departures was an increase of 8,540 or 18% over February 1995, mainly due to an increase of 8,560 in short term visitor departures.

2.1 OVERSEAS ARRIVALS AND DEPARTURES BY MONTH

Period	Permanent Arrivals	SHORT - TERM ARRIVALS		LONG - TERM ARRIVALS		Total Arrivals
		Australian residents	Overseas visitors	Australian residents	Overseas visitors	
ARRIVALS						
Financial years						
1992-93	7 930	261 600	234 010	8 260	6 090	517 890
1993-94	7 740	269 890	297 750	8 900	7 430	591 700
1994-95	10 380	289 250	339 690	9 070	8 470	656 850
Months						
Dec 94	840	17 570	43 800	1 340	350	63 900
Jan 95	900	34 150	27 210	890	1 140	64 280
Feb 95	820	20 240	28 120	690	2 320	52 190
Mar 95	850	21 520	30 270	640	450	53 730
Apr 95	940	20 790	27 780	630	550	50 660
May 95	870	18 200	21 640	520	380	41 620
Jun 95	970	19 740	24 790	640	370	46 510
Jul 95	970	29 140	24 480	680	1 720	56 980
Aug 95	950	26 650	24 840	620	450	53 520
Sep 95	890	27 730	24 620	680	470	54 400
Oct 95	1 070	35 360	30 330	700	570	68 020
Nov 95	1 020	22 700	33 660	820	370	58 560
Dec 95	1 040	18 450	46 800	1 260	510	68 070
Jan 96	1 150	37 460	24 250	840	1 460	65 170
Feb 96	940	20 650	39 640	630	2 530	64 380
DEPARTURES						
Period	Permanent Departures	SHORT - TERM DEPARTURES		LONG - TERM DEPARTURES		Total Departures
		Australian residents	Overseas visitors	Australian residents	Overseas visitors	
Financial years						
1992-93	3 410	269 830	232 470	7 180	3 680	516 570
1993-94	3 430	274 770	290 540	7 340	4 140	580 220
1994-95	3 580	292 270	343 610	7 560	4 710	651 730
Months						
Dec 94	330	30 820	36 670	620	960	69 400
Jan 95	400	20 120	35 440	1 070	400	57 430
Feb 95	340	18 010	27 140	670	340	46 490
Mar 95	310	22 370	34 350	650	340	58 010
Apr 95	270	25 070	28 050	680	310	54 390
May 95	270	21 260	26 360	620	220	48 730
Jun 95	250	24 320	27 820	540	490	53 420
Jul 95	320	30 370	22 890	590	500	54 670
Aug 95	340	23 320	25 650	650	300	50 260
Sep 95	250	29 110	23 430	520	320	53 640
Oct 95	290	25 990	26 720	460	290	53 750
Nov 95	320	22 200	30 630	500	580	54 230
Dec 95	370	33 040	38 900	650	1 110	74 070
Jan 96	410	19 640	37 530	1 010	380	58 970
Feb 96	320	17 840	35 700	730	440	55 030

Reference: Unpublished table PMTR0001. Since figures have been rounded to the nearest ten, discrepancies may occur between sums of component items and totals.

Analysis of Table 2.2

Short term overseas visitor arrivals for December quarter 1995 increased by 4,600 or 4% compared with the same quarter last year. This follows on a one per cent increase for September quarter 1995 compared with September quarter 1994. There was an expected rise of 36,800 or 50% from September quarter 1995.

The number of Australian residents departing on short term overseas journeys in the December quarter 1995 fell by 1,600 or 2% from September quarter 1995. However, it represented an increase of 4,300 or 6% from December quarter 1994.

December quarter 1995, which includes the Christmas holidays, had the highest number of short term arrivals and departures in all the six quarters listed.

2.2 SHORT TERM OVERSEAS ARRIVALS AND DEPARTURES

Period	Australian residents	Overseas visitors	Total
Financial years			
1992-93	261 600	234 000	495 600
1993-94	269 900	297 700	567 600
1994-95	289 200	339 700	628 900
Quarters			
Sep 94	82 300	73 600	155 900
Dec 94	72 300	106 200	178 500
Mar 95	75 900	85 600	161 500
Jun 95	58 700	74 200	132 900
Sep 95	83 500	74 000	157 500
Dec 95	76 500	110 800	187 300
DEPARTURES			
Financial years			
1992-93	269 800	232 500	502 300
1993-94	274 800	290 500	565 300
1994-95	292 300	343 600	635 900
Quarters			
Sep 94	84 200	71 600	155 800
Dec 94	76 900	92 800	169 700
Mar 95	60 500	96 900	157 400
Jun 95	70 600	82 200	152 800
Sep 95	82 800	72 000	154 800
Dec 95	81 200	96 200	177 400

Reference: Unpublished table PMTR0001

Analysis of Table 2.3

February 1996 was noticeable for the huge increase in short term overseas arrivals from Indonesia, which was the highest number recorded in the last 15 months (this followed on a large rise in December 1995 and a sharp fall in January 1996).

The total of 8,150 was an increase of 3,940 or 94% from February 1995 and a jump of 5,230 or 179% from January 1996.

2.3 SHORT TERM OVERSEAS ARRIVALS FROM SELECTED COUNTRIES¹

Period	Country of origin					Total ²
	New Zealand	UK & Ireland	Japan	Indonesia	Singapore	
Financial years						
1992-93	21 900	52 250	22 490	11 320	41 260	234 010
1993-94	25 150	57 480	27 530	27 840	50 700	297 750
1994-95	24 330	61 070	28 980	44 240	59 600	339 690
Months						
Dec 94	2890	8 390	2 950	6 510	10 600	43 800
Jan 95	1 630	6 870	2 640	3 360	3 200	27 210
Feb 95	950	6 240	2 620	4 210	3 370	28 120
Mar 95	2 130	5 750	2 650	4 760	4 300	30 270
Apr 95	1 820	6 080	2 110	3 230	3 820	27 780
May 95	1 520	2 820	1 710	2 600	4 860	21 640
Jun 95	1 870	2 200	1 380	4 100	7 700	24 790
Jul 95	2 030	3 010	2 520	4 680	2 900	24 480
Aug 95	2 160	2 660	3 950	2 820	3 780	24 840
Sep 95	2 750	3 750	2 880	2 360	4 670	24 620
Oct 95	2 100	5 780	2 050	2 990	4 010	30 330
Nov 95	1 510	6 680	1 920	3 450	6 660	33 660
Dec 95	2 360	8 370	2 970	7 650	11 040	46 800
Jan 96	1 700	5 760	2 670	2 920	2 400	24 250
Feb 96	1 760	6 440	3 190	8 150	6 460	39 640

¹ Comprises travellers whose intended or actual stay is less than twelve months.

² Total includes the countries listed here and all other countries not listed in this table.

Reference: Unpublished table PMTR0013

Analysis of Table 2.4

In December quarter 1995 there were 109,900 short term overseas arrivals by air. Of these, 57% (62,500 persons) gave the reason for their journey as 'holiday', and a further 29% (31,700) said they were 'visiting friends or relatives'.

People on holiday were mainly from Singapore (27%), Indonesia (17%), and the United Kingdom and Ireland (11%).

People visiting friends or relatives were predominantly from the United Kingdom and Ireland (39%), New Zealand (11%), Singapore (9%) and Malaysia (6%).

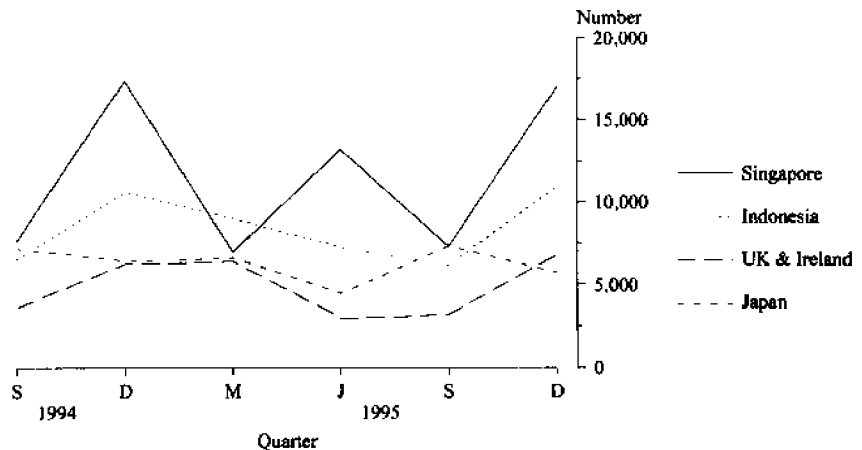
2.4 SHORT TERM OVERSEAS ARRIVALS BY AIR : PURPOSE OF JOURNEY: DECEMBER QUARTER 1995

Country of residence	Convention/ business ¹	Visiting friends/ relatives	Holiday	Employment and education	Other and not stated	Total this quarter
('000)						
Asia						
Indonesia	0.9	1.0	10.9	0.6	0.7	14.1
Japan	0.5	0.2	5.7	0.2	0.2	6.8
Malaysia	0.6	1.9	4.9	0.4	0.2	7.9
Singapore	0.9	2.9	17.0	0.5	0.5	21.7
Thailand	0.3	0.3	2.7	0.1	0.1	3.4
Other Asia	1.1	1.7	1.9	0.5	0.3	5.8
Total Asia	4.3	8.0	43.1	2.3	2.0	59.7
Other						
Germany	0.2	0.8	2.9	—	0.1	4.1
New Zealand	0.6	3.6	1.3	0.2	0.4	6.0
U.K. and Ireland	0.8	12.4	6.8	0.3	0.4	20.7
U.S.A.	1.2	1.6	1.1	0.2	—	4.1
Other	2.0	5.3	7.3	0.2	0.6	15.4
Total Other	4.8	23.7	19.4	0.9	1.5	50.3
Total	9.1	31.7	62.5	3.2	3.5	109.9

¹ From September 1994 includes convention, conference and business.

Reference: Unpublished table PMTR0031

SHORT TERM OVERSEAS ARRIVALS BY AIR:
FOR HOLIDAYS IN WESTERN AUSTRALIA
LAST SIX QUARTERS



Source: Unpublished Table: PMTR0031

Analysis of Table 2.5

The February 1996 totals of 3,720 short term resident departures to Indonesia and 1,040 departures to Malaysia were the lowest recorded for these countries in the last 15 months.

2.5 SHORT TERM OVERSEAS RESIDENT DEPARTURES TO SELECTED DESTINATIONS

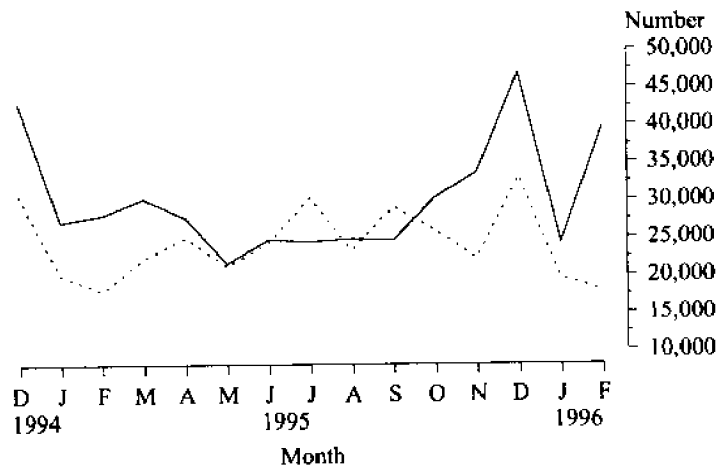
Country of destination	New Zealand	UK & Ireland	Indonesia ¹	Malaysia	Singapore	Total ²
Period						
Financial years						
1992-93	22 680	36 880	59 760	24 480	29 680	269 830
1993-94	22 020	38 580	64 720	23 420	24 170	274 770
1994-95	25 750	40 850	68 420	23 070	25 840	292 270
Months						
Dec 94	3 940	3 340	5 680	2 780	2 980	30 820
Jan 95	1 930	1 580	4 420	2 150	2 020	20 120
Feb 95	2 080	2 040	4 670	1 210	1 250	18 010
Mar 95	3 240	2 610	5 100	1 590	2 810	22 370
Apr 95	1 720	4 460	5 140	1 860	1 660	25 070
May 95	1 440	4 280	3 810	1 830	1 100	21 260
Jun 95	1 220	4 450	4 860	1 380	2 390	24 320
Jul 95	1 940	5 070	8 010	2 190	2 500	30 370
Aug 95	1 600	3 650	5 920	1 440	1 940	23 320
Sep 95	2 480	4 660	5 880	3 190	3 070	29 110
Oct 95	2 160	2 860	7 330	1 870	2 750	25 990
Nov 95	2 000	2 060	4 100	2 020	3 100	22 200
Dec 95	4 100	3 800	5 650	2 820	3 030	33 040
Jan 96	2 140	1 400	4 630	1 480	2 740	19 640
Feb 96	2 290	1 680	3 720	1 040	1 990	17 840

¹ Includes Bali.

² Total includes the countries listed here and all other countries not listed in this table.

Reference: Unpublished table PMTR0013.

TOTAL SHORT TERM ARRIVALS OF OVERSEAS VISITORS AND DEPARTURES OF WESTERN AUSTRALIAN RESIDENTS BY MONTH



Source: Unpublished table PMTR0013

— Arrivals

- - - - - Departures

Analysis of Table 2.6

The main reasons given for short term resident departures by air in December quarter 1995 were 'holiday' (51%), 'visiting friends or relatives' (28%), and attending 'convention or conference' or 'on business' (15%).

The most popular destinations for residents departing on holiday were Indonesia (33%), and Singapore (12%).

Of those residents departing to visit friends or relatives overseas, 20% went to the United Kingdom and Ireland and a further 17% went to New Zealand.

2.6 SHORT TERM OVERSEAS RESIDENT DEPARTURES BY AIR: PURPOSE OF JOURNEY: DECEMBER QUARTER 1995

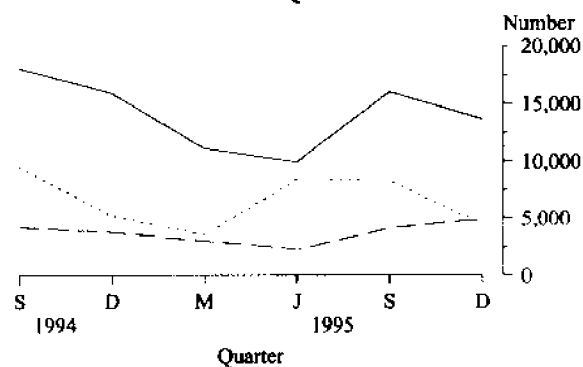
Country of residence	Convention/ business ¹	Visiting friends/ relatives	Holiday	Employment and education	Other and not stated	Total this quarter
(000)						
Asia						
Hong Kong	0.9	0.9	1.2	0.1	0.1	3.3
Indonesia ²	2.0	0.7	13.7	0.4	0.3	17.1
Japan	0.2	0.2	0.1	0.1	0.1	0.7
Malaysia	1.1	1.6	3.5	0.1	0.3	6.7
Singapore	1.5	2.1	5.0	0.2	0.1	8.9
Thailand	0.2	0.5	2.3	0.2	—	3.2
Other Asia	1.9	2.8	2.6	0.4	0.2	7.6
Total Asia	7.8	8.8	28.4	1.5	1.1	47.5
Other						
Germany	0.1	0.4	0.3	0.1	—	0.8
Italy	0.2	0.6	0.5	0.1	—	1.2
New Zealand	0.8	3.9	3.1	0.1	0.3	8.2
U.K. and Ireland	0.7	4.5	2.7	0.4	0.4	8.7
U.S.A.	1.0	1.0	2.5	—	0.2	4.7
Other	1.8	3.4	3.7	0.3	0.8	9.9
Total Other	4.6	13.8	12.8	1.0	1.7	33.5
Total	12.3	22.5	41.1	2.4	2.7	81.1

¹ From September 1994 includes convention, conference and business.

² Includes Bali

Reference: Unpublished table PMTR0031

SHORT TERM OVERSEAS RESIDENT DEPARTURES BY AIR: PURPOSE OF JOURNEY: HOLIDAY LAST SIX QUARTERS



Source: Unpublished Table PMTR0031

— Indonesia

..... Europe

- - - Singapore

2.7 TOURIST ACCOMMODATION

Period	Hotels, Motels, Guest Houses with facilities			Caravan parks		
	Guest rooms	Room occupancy rates	Guest arrivals	Number of sites	Site occupancy rates	Guest arrivals
	Number	%	'000	Number	%	'000
Financial years						
1991-92	14 624 ¹	52	1 934.7	28 174 ¹	32	1 260
1992-93	14 577 ¹	53	1 965.2	28 308 ¹	38	1 194
1993-94	14 754 ¹	57	2 153.8	29 202 ¹	39	1 250
Months						
Oct 94		68	218		39	107
Nov 94		62	180		35	68
Dec 94	14 734	54	182	29 625	37	100
Jan 95		58	192		45	135
Feb 95		60	156		38	70
Mar 95	14 742	60	178	29 480	37	80
Apr 95		59	182		41	116
May 95		57	173		36	79
Jun 95	14 754	57	166	29 554	40	100
Jul 95		55	178		45	140
Aug 95		61	193		44	138
Sep 95	14 720	68	218	29 828	43	135
Oct 95		63	240		39	112
Nov 95		59	194		35	72
Dec 95	14 924	51	197	30 063	38	105
	Holiday Flats, Units, Houses			Visitor Hostels		
Period	Guest Units	Unit occupancy rates	Unit lettings	Bed Spaces	Bed occupancy rates	Bed-nights sold
	Number	%	'000	Number	%	'000
Financial years						
1991-92	1 895 ¹	53	91	2 683 ¹	34	323
1992-93	1 993 ¹	52	86	3 112 ¹	36	386
1993-94	2 224 ¹	55	96	3 119 ¹	38	416
Months						
Oct 94		66	10		39	34
Nov 94		55	9		41	35
Dec 94	2 302	60	10	2 858	42	37
Jan 95		73	10		46	39
Feb 95		58	8		45	35
Mar 95	2 414	56	10	2 794	43	37
Apr 95		63	10		48	40
May 95		45	8		41	36
Jun 95	2 419	45	8	2 834	41	35
Jul 95		56	11		43	37
Aug 95		48	9		38	34
Sep 95	2 439	58	12	2 831	41	35
Oct 95		66	13		44	41
Nov 95		55	11		42	38
Dec 95	2 581	61	12	3 033	43	40

¹ Number at 30 June.

Reference: Tourist Accommodation, Western Australia (8635.5)

For more information regarding this table, please contact Pam Prince on (09) 360 5932

Analysis of Table 3.1

The seasonally adjusted unemployment rate decreased 0.6 percentage points to 7.2% in April 1996. The trend estimate of the unemployment rate decreased 0.1 percentage point.

The seasonally adjusted number of persons unemployed decreased by 6,300 to 63,400, while the number of persons employed decreased by 9,800 to 823,300.

Western Australia's seasonally adjusted participation rate for April 1996 decreased by 1.3 percentage points to 64.9% and continues to be the highest of all the states.

Trend estimates for October 1995 to March 1996 have been revised.

3.1 LABOUR FORCE STATUS (AGED 15 YEARS AND OVER): SEASONALLY ADJUSTED SERIES

Month	Employed full-time	Total employed	Total unemployed	Unemployment rate	Participation rate
	'000	'000	'000	%	%
Males					
Jun 95	428.8	477.3	36.4	7.1	77.0
Jul 95	430.5	478.7	34.7	6.8	76.8
Aug 95	427.0	475.7	34.8	6.8	76.2
Sep 95	430.8	478.0	37.1	7.2	76.8
Oct 95	429.5	478.5	36.8	7.1	76.7
Nov 95	429.6	479.6	37.4	7.2	76.8
Dec 95	425.2	477.2	38.2	7.4	76.4
Jan 96	424.9	476.0	40.9	7.9	76.5
Feb 96	428.5	475.8	42.4	8.2	76.5
Mar 96	426.9	477.9	42.6	8.2	76.7
Apr 96	424.9	477.1	39.3	7.6	76.0
Females					
Jun 95	187.2	351.7	28.8	7.6	56.5
Jul 95	186.0	352.4	32.5	8.4	57.1
Aug 95	192.7	355.4	27.7	7.2	56.7
Sep 95	191.0	350.7	30.2	7.9	56.3
Oct 95	187.8	351.5	29.1	7.6	56.1
Nov 95	189.4	352.7	31.3	8.1	56.5
Dec 95	185.2	349.9	29.6	7.8	55.8
Jan 96	185.2	346.2	29.7	7.9	55.1
Feb 96	194.3	359.1	29.6	7.6	56.9
Mar 96	194.9	355.1	27.1	7.1	55.8
Apr 96	197.0	346.2	24.2	6.5	54.0
Persons					
Jun 95	616.0	829.0	65.2	7.3	66.7
Jul 95	616.5	831.1	67.2	7.5	66.9
Aug 95	619.7	831.2	62.6	7.0	66.4
Sep 95	621.8	828.6	67.3	7.5	66.5
Oct 95	617.4	830.0	65.9	7.4	66.3
Nov 95	618.9	832.3	68.6	7.6	66.6
Dec 95	610.5	827.1	67.8	7.6	66.0
Jan 96	610.1	822.2	70.6	7.9	65.7
Feb 96	622.8	834.9	71.9	7.9	66.7
Mar 96	621.8	833.1	69.7	7.7	66.2
Apr 96	621.9	823.3	63.4	7.2	64.9

Reference: The Labour Force, Australia (6202.0)

Analysis of Table 3.2

3.2 LABOUR FORCE STATUS (AGED 15 YEARS AND OVER): TREND SERIES

For more information regarding these tables, please contact Renae Gibson on (09) 360 5332.

Month*	Employed full-time	Total employed	Total unemployed	Unemployment rate	Participation rate
	000	000	000	%	%
Males					
Jun 95	428.0	477.4	36.7	7.1	77.0
Jul 95	429.2	477.8	35.8	7.0	76.8
Aug 95	429.6	477.9	35.6	6.9	76.7
Sep 95	429.5	478.0	35.9	7.0	76.6
Oct 95	428.9	478.0	36.7	7.1	76.6
Nov 95r	428.2	477.8	37.9	7.4	76.6
Dec 95r	427.5	477.5	39.2	7.6	76.6
Jan 96r	426.9	477.2	40.2	7.8	76.5
Feb 96r	426.4	476.9	40.9	7.9	76.5
Mar 96r	426.0	476.7	41.4	8.0	76.4
Apr 96	425.8	476.7	41.7	8.0	76.3
Females					
Jun 95	190.8	354.4	28.6	7.5	56.9
Jul 95r	190.2	354.0	29.3	7.7	56.8
Aug 95	189.5	353.0	29.8	7.8	56.6
Sep 95	188.8	352.0	30.1	7.9	56.4
Oct 95r	188.2	351.4	30.2	7.9	56.3
Nov 95r	188.0	351.3	30.1	7.9	56.1
Dec 95r	188.4	351.5	29.8	7.8	56.0
Jan 96r	189.5	351.8	29.3	7.7	55.9
Feb 96r	191.3	352.0	28.4	7.5	55.7
Mar 96r	193.3	352.0	27.4	7.2	55.4
Apr 96	195.4	351.7	26.4	7.0	55.1
Persons					
Jun 95	618.8	831.8	65.4	7.3	66.9
Jul 95r	619.4	831.7	65.2	7.3	66.8
Aug 95	619.1	831.0	65.4	7.3	66.6
Sep 95	618.3	829.9	66.0	7.4	66.5
Oct 95 r	617.1	829.4	66.9	7.5	66.4
Nov 95r	616.2	829.2	68.1	7.6	66.3
Dec 95r	615.8	829.0	69.0	7.7	66.3
Jan 96r	616.3	829.0	69.4	7.7	66.2
Feb 96r	617.7	828.9	69.3	7.7	66.0
Mar 96r	619.3	828.7	68.8	7.7	65.9
Apr 96	621.1	828.3	68.1	7.6	65.7

Reference: The Labour Force, Australia (6202.0)

Analysis of Table 3.3

The total number of employees rose from 550,500 in March 1994 to 558,800 in March 1995. During this twelve month period, the public sector total number of employees rose by 3,600 to 157,600, and the private sector total number of employees showed an increase of 4,800 to 401,300.

3.3 NUMBER OF EMPLOYED WAGE AND SALARY EARNERS BY INDUSTRY AND SECTOR

Particulars	Number of Employees				Gross earnings
	Mar 1994	Sept 1994	Dec 1994	Mar 1995	Mar quarter 1995
	'000	'000	'000	'000	\$m
INDUSTRY					
Mining	20.6	20.7	21.5	23.8	323.5
Manufacturing	58.5	59.7	57.0	56.7	449.9
Electricity, gas and water	8.7	8.4	8.2	8.0	69.1
Construction	28.3	26.0	26.3	28.0	246.6
Wholesale trade	39.9	38.9	38.1	40.0	301.0
Retail trade	78.8	81.8	82.5	80.9	334.9
Transport and storage	22.3	22.2	21.8	21.7	204.5
Communication	8.2	8.5	8.7	8.8	79.4
Finance, property and business	60.8	63.4	66.3	64.2	493.9
Public administration and defence	29.5	29.9	31.7	30.1	226.5
Community services	144.9	149.1	151.1	152.3	970.9
Recreation, personal and other services	48.4	42.3	44.1	42.8	193.9
Total all industries¹	550.5	552.2	558.8	558.8	3 906.2
SECTOR					
Private	396.5	398.9	398.8	401.3	2 692.4
Government					
Commonwealth	22.0	21.5	22.1	22.3	198.6
State	118.7	118.5	125.3	122.7	937.0
Local	13.3	13.3	12.7	12.6	78.3
Total Government	154.0	153.2	160.1	157.6	1 213.8
Total all sectors	550.5	552.2	558.8	558.8	3 906.2

Particulars	FEBRUARY 1994			FEBRUARY 1995		
	Males	Females	Persons	Males	Females	Persons
INDUSTRY						
Mining	18.4	2.9	21.3	20.6	3.4	24.0
Manufacturing	46.2	13.7	59.9	44.0	13.2	57.2
Electricity, gas and water	7.8	0.9	8.8	7.0	1.0	8.0
Construction	22.9	5.6	28.5	23.1	4.1	27.2
Wholesale trade	28.1	11.7	39.8	27.5	12.9	40.4
Retail trade	33.0	44.1	77.1	33.4	46.5	80.0
Transport and storage	17.9	4.4	22.3	16.1	5.6	21.7
Communication	5.8	2.4	8.3	6.0	2.7	8.8
Finance, property and business	28.6	32.7	61.2	29.4	34.3	63.7
Public administration and defence	17.9	11.6	29.5	17.7	12.4	30.1
Community services	49.3	92.6	141.9	43.8	101.2	145.0
Recreation, personal and other services	19.7	26.6	46.3	18.1	24.9	43.0
Total all industries¹	296.9	249.7	546.5	287.9	262.6	550.5
SECTOR						
Private	218.2	175.5	393.8	211.8	187.8	399.6
Government						
Commonwealth	13.8	9.0	22.8	13.1	9.1	22.2
State	56.4	60.2	116.6	55.3	61.0	116.2
Local	8.4	4.8	13.3	7.8	4.7	12.5
Total Government	78.6	74.1	152.7	76.1	74.8	150.9
Total all sectors	296.9	249.7	546.5	287.9	262.6	550.5

¹ Includes employees of government agencies classified to Agriculture, forestry, fishing and hunting.

Reference: Employed Wage and Salary Earners (6248.0)

Analysis of Table 3.4

Over the past twelve months to November 1995, Western Australian average weekly total earnings for full-time adult persons increased by 5.4% compared with 4.7% for Australia.

Western Australian average weekly total earnings for full-time adult persons in November 1995 were \$713.10, while the comparable Australian average earnings in November 1995 were \$702.90.

3.4 AVERAGE WEEKLY EARNINGS OF EMPLOYEES

Reference period	MALES		
	Full Time Adults		All males
	Ordinary time earnings	Total earnings	Total earnings
	(dollars)		
19 Aug 94	682.30	734.70	643.80
18 Nov 94	692.40	758.00	663.70
17 Feb 95	695.50	758.60	655.20
19 May 95	701.80	764.20	656.60
18 Aug 95	716.80	776.20	677.00
17 Nov 95	730.00	792.20	682.70
Reference period	FEMALES		
	Full Time Adults		All females
	Ordinary time earnings	Total earnings	Total earnings
	(dollars)		
19 Aug 94	515.10	528.10	381.80
18 Nov 94	523.70	538.40	398.50
17 Feb 95	536.90	553.60	405.20
19 May 95	541.80	557.40	403.90
18 Aug 95	555.90	568.70	401.30
17 Nov 95	560.80	574.40	406.50
Reference period	PERSONS		
	Full Time Adults		All employees
	Ordinary time earnings	Total earnings	Total earnings
	(dollars)		
19 Aug 94	619.30	656.90	516.20
18 Nov 94	630.10	676.90	538.80
17 Feb 95	637.50	683.60	537.10
19 May 95	645.80	691.90	539.90
18 Aug 95	660.00	702.90	544.40
17 Nov 95	668.50	713.10	548.40

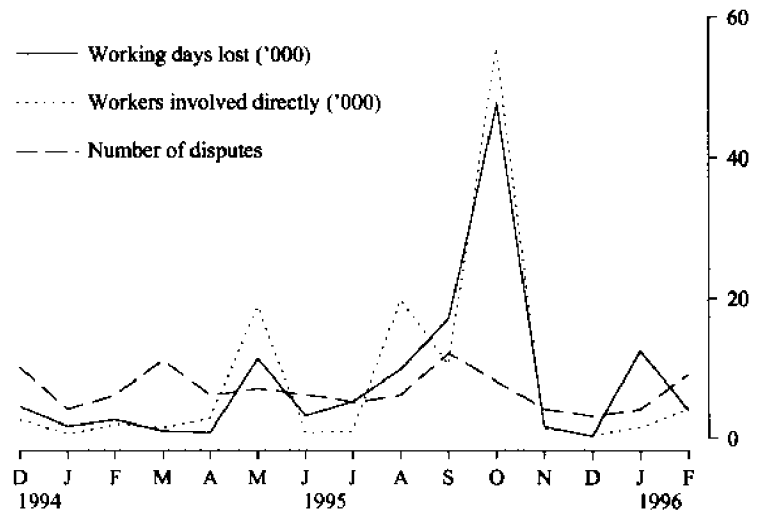
Reference: Average Weekly Earnings, States and Australia, (6302.0)

3.5 INDUSTRIAL DISPUTES CAUSING STOPPAGE OF WORK

Period	Number of disputes	Workers Involved		Total	Working days lost
		Directly	Indirectly		
	Number	'000	'000	'000	'000
Calendar year					
1993	111	27.4	0.2	27.6	29.5
1994	82	15.7	0.2	15.9	27.4
1995	70	99.7	0.0	99.7	101.6
Months					
Dec 94	10	2.4	0.1	2.5	4.4
Jan 95	4	0.6	—	0.6	1.6
Feb 95	6	1.9	—	1.9	2.5
Mar 95	11	1.4	—	1.4	1.0
Apr 95	6	2.8	—	2.8	0.8
May 95	7	18.8	—	18.8	11.2
Jun 95	6	0.8	—	0.8	3.1
Jul 95	5	1.1	—	1.1	5.1
Aug 95	6	19.8	—	19.8	9.7
Sep 95	12	10.4	—	10.4	17.0
Oct 95	8	55.5	—	55.5	47.6
Nov 95	4	1.2	—	1.2	1.6
Dec 95	3	0.4	—	0.4	0.2
Jan 96	4	1.5	—	1.5	12.4
Feb 96	9	4.0	—	4.0	3.9

Reference: Industrial Disputes, Unpublished ABS Data.

INDUSTRIAL DISPUTES



Source: Unpublished ABS data

Analysis of Table 4.1

4.1 MONTHLY RETAIL TURNOVER : ORIGINAL ESTIMATES

Data in this table have been revised and now show data from the redesigned retail Business Survey. see Information Paper (8511.0) issued on 1 December 1994 or Retail Trade Australia (8501.0) for more detail on the survey redesign.

Estimated turnover of Western Australian retail establishments during March 1996 was \$992.7 million (at current prices), an increase of 3.2% over the previous month. The trend estimates show an increase of 0.4% over the previous month.

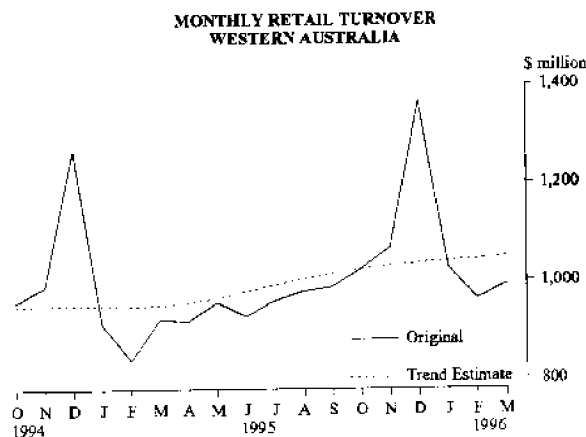
From March 1995 to March 1996, trend estimates indicate a national annual growth rate of 8.2%. The annual growth rate for Western Australia for the same period was 10.3%.

The national trend estimates show increases of 0.6%, 0.5% and 0.6% for the months of January, February and March 1996. For the same three months, Western Australia recorded increases of 0.4%, 0.3% and 0.4% respectively.

Months	Food	Department stores	Clothing and soft goods stores	Other Household goods	Recreational goods
Mar 95	418.6	76.2	54.5	101.9	44.4
Apr 95	404.9	91.9	58.7	96.6	45.2
May 95	407.6	99.7	67.8	111.7	46.5
Jun 95	403.5	91.5	63.6	111.3	43.6
Jul 95	414.4	85.9	60.9	106.3	53.0
Aug 95	431.2	89.0	59.1	105.2	53.1
Sep 95	430.0	84.7	61.1	109.4	52.5
Oct 95	436.2	93.2	64.3	122.3	54.2
Nov 95	452.7	107.4	66.5	129.8	58.9
Dec 95	532.9	182.0	86.3	163.4	88.6
Jan 96	458.9	83.3	59.3	111.5	55.5
Feb 96	433.9	74.8	49.5	109.8	50.3
Mar 96	445.0	82.5	55.4	101.0	53.0

Months	Other	Hospitality and services	Totals		
			Original	Seasonally adjusted	Trend estimates
Mar 95	69.0	157.4	922.0	949.2	950.6
Apr 95	66.4	155.4	919.1	953.1	956.1
May 95	73.4	149.2	955.9	966.1	965.8
Jun 95	65.3	149.4	928.2	974.2	978.5
Jul 95	70.6	167.9	959.0	984.8	992.0
Aug 95	77.4	163.6	978.6	1 026.8	1 004.8
Sep 95	79.9	169.9	987.5	1 006.7	1 016.1 r
Oct 95	79.3	174.7	1 024.2	1 034.0	1 024.8 r
Nov 95	80.7	170.4	1 066.4	1 015.6	1 031.2 r
Dec 95	123.0	191.2	1 367.4	1 041.8	1 036.1 r
Jan 96	84.8	173.7	1 027.0	1 051.2	1 040.5 r
Feb 96	79.6	164.2	962.1	1 041.4	1 044.0 r
Mar 96	80.5	175.3	992.7	1 040.3	1 048.5

Reference: Retail Trade, Australia (8501.0)



Source: Retail Trade, Australia (8501.0)

4.2 CONSUMER PRICE INDEX: PERTH

Analysis of Table 4.2

The Consumer Price Index (CPI) All Groups Perth increased by 0.7% between the December quarter 1995 and the March quarter 1996

Major contributors to the change from the December quarter 1995 to the March quarter 1996 were increases in education fees, the cost of pharmaceuticals (due mainly to the reduced effect of the PBS safety net scheme), cigarettes and tobacco prices, mortgage interest charges, beer prices entertainment and the costs of hospital and medical services. Partially offsetting these increases were falls - mainly in the prices for petrol, furniture, video and sound equipment, cakes and biscuits and motor vehicles.

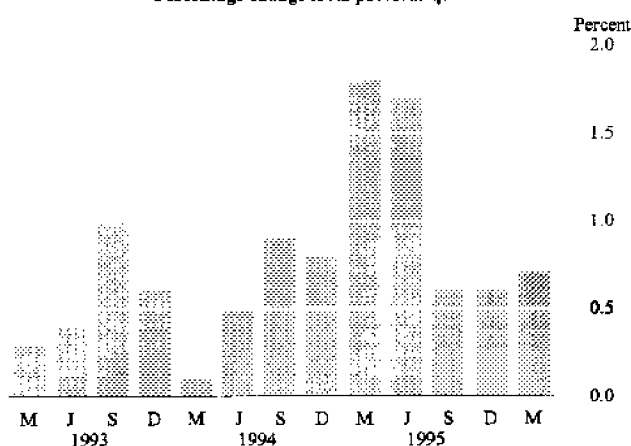
The increase in the CPI All Groups Perth from March 1995 to March 1996 was 3.6%.

Period	Food	Clothing	Housing	Household equipment and operation	Transportation
(Base of each index: Year 1989-90 = 100.0)					
1992-93	108.8	108.6	87.9	107.4	111.2
1993-94	110.0	108.2	87.3	108.2	114.4
1994-95	113.4	107.4	94.0	109.0	119.0
1994					
Sep qtr	111.6	107.9	88.5	108.3	117.9
Dec qtr	111.4	107.4	91.8	109.0	117.2
1995					
Mar qtr					
Jun qtr	115.7	107.5	99.0	110.0	121.4
Sep qtr	116.6	106.9	100.0	110.5	123.4
Dec qtr	115.8	107.3	100.8	110.9	123.1
1996					
Mar qtr	116.9	106.8	101.2	111.1	123.2

Period	Tobacco and alcohol	Health and personal care	Recreation and education	All groups
(Base of each index: Year 1989-90 = 100.0)				
1992-93	114.0	119.8	106.7	106.2
1993-94	128.8	123.8	107.6	108.5
1994-95	136.8	130.4	109.6	112.3
1994				
Sep qtr	133.6	127.6	107.7	110.1
Dec qtr	135.9	128.4	109.4	111.0
1995				
Mar qtr	137.7	130.1	109.0	113.0
Jun qtr	140.2	135.7	112.3	114.9
Sep qtr	140.6	135.7	112.1	115.6
Dec qtr	145.6	137.2	113.8	116.3
1996				
Mar qtr	147.5	140.4	115.5	117.1

Reference: Consumer Price Index (6401.0)

CPI ALL GROUPS: PERTH
Percentage change from previous quarter



Analysis of Table 5.1

The number of houses approved in March 1996 decreased by 1.3% when compared with February 1996 and decreased by 12.5% when compared with March 1995. The number of total dwelling units approved in March 1996 increased by 1.3% when compared with February 1996 and decreased by 14.8% when compared with March 1995.

The Building Approvals trend series for houses recorded a low of 1,001 in October 1995 and has since risen to a level of 1,110 in March 1996.

For more information about this table, call Neil Griffin on (09) 360 5247

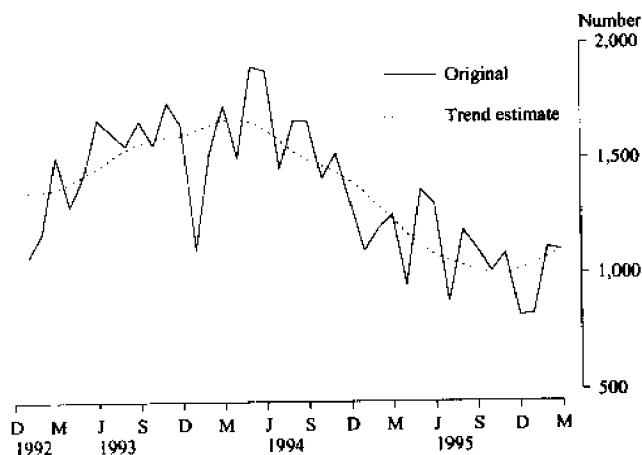
5.1 NEW RESIDENTIAL BUILDING APPROVED

Period	Houses		Other Residential Buildings		Total ¹	
	Dwelling Units	Value	Dwelling Units	Value	Dwelling Units	Value
	Number	\$m	Number	\$m	Number	\$m
Financial years						
1992-93	16 485	1 173.7	5 994	345.7	22 568	1 519.4
1993-94	19 437	1 503.7	7 144	461.0	26 776	1 964.7
1994-95	16 207	1 354.3	6 105	420.3	22 427	1 774.6
Months						
Jan 95	1 100	90.6	431	25.8	1 535	116.4
Feb 95	1 195	102.0	383	26.8	1 586	129.0
Mar 95	1 258	111.0	496	39.0	1 761	150.4
Apr 95	952	81.7	222	16.1	1 180	97.9
May 95	1 367	115.2	426	35.7	1 794	151.0
Jun 95	1 301	109.0	491	35.3	1 795	144.3
Jul 95	883	77.8	316	23.1	1 203	100.9
Aug 95	1 189	104.8	399	30.6	1 596	135.4
Sep 95	1 111	99.2	293	22.9	1 410	122.1
Oct 95	1 008	96.6	253	20.4	1 265	117.0
Nov 95	1 087	99.1	286	22.7	1 378	121.8
Dec 95	819	79.5	170	12.9	995	92.4
Jan 96	827	82.5	410	33.2	1 241	115.7
Feb 96	1 115	105.1	342	25.5	1 482	130.6
Mar 96	1 101	104.5	362	33.7	1 501	138.2

¹ Includes conversions

Reference: Building Approvals, Western Australia (8731.5)

**NEW HOUSES APPROVED
WESTERN AUSTRALIA**



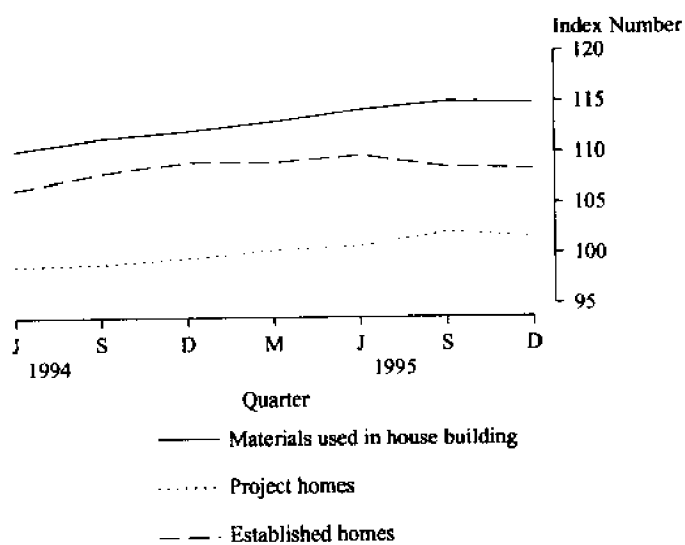
Source: Building Approvals, Western Australia (8731.5)

5.3 SELECTED HOUSING PRICE INDEXES: PERTH

Period	Materials used in house building	Project homes	Established homes
(Base of each index: 1989-90 = 100.0)			
1992-93	106.9	92.8	98.4
1993-94	109.1	96.2	104.7
1994-95	112.7	100.0	109.0
1994			
Sep qtr	111.4	99.0	108.0
Dec qtr	112.1	100.0	109.1
1995			
Mar qtr	113.1	100.4	109.1
Jun qtr	114.2	100.8	109.7
Sep qtr	115.0	102.2	108.6
Dec qtr	114.9	101.6	108.3

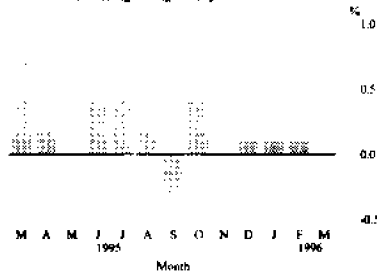
References: Price Index of Materials Used in House Building (6408.0); House Price Indexes, (6416.0)

HOUSING INDEXES: PERTH



5.4 PRICE INDEX OF MATERIALS USED IN BUILDING OTHER THAN HOUSE BUILDING: PERTH

PRICE INDEX OF MATERIALS USED IN BUILDING OTHER THAN HOUSE BUILDING ALL GROUPS: PERTH
Percentage change from previous month



Period	All groups	Special Series		
		Electrical materials	Mechanical services	Plumbing materials
(Base of each index 1989-90 = 100)				
1992-93	105.7	105.7	103.7	103.7
1993-94	107.1	101.9	104.2	105.1
1994-95	110.1	107.3	106.8	114.4
1995				
January	110.0	109.1	106.1	115.3
February	110.5	109.4	107.3	115.3
March	111.4	109.4	108.5	115.5
April	111.6	110.2	109.0	115.3
May	111.6	110.2	108.9	116.8
June	112.0	112.0	109.3	118.7
July	112.7	112.6	109.9	120.4
August	112.9	113.1	109.8	121.0
September	112.6	113.2	109.8	119.9
October	113.1	112.9	111.5	120.7
November	113.1	112.6	112.1	120.0
December p	113.2	112.6	112.3	119.8
1996				
January p	113.3	112.5	112.4	120.0
February p	113.4	112.5	112.9	120.0
March p	113.4	112.8	113.4	119.7

Period	Selected Major Building Materials				
	Structural timber	Clay bricks	Ready mixed concrete	Structural steel	Aluminium windows
(Base of each index 1989-90 = 100)					
1992-93	102.7	111.3	115.5	96.3	103.8
1993-94	110.6	113.9	116.6	100.4	104.4
1994-95	110.6	118.0	117.8	103.6	112.4
1995					
January	109.8	117.8	117.3	103.7	112.3
February	109.7	117.8	117.2	103.7	112.3
March	109.7	117.8	117.5	103.7	118.2
April	109.8	117.8	117.5	103.7	118.2
May	110.0	120.2	115.9	103.8	118.2
June	109.9	120.2	116.0	103.8	118.2
July	109.9	120.2	116.0	105.7	118.2
August	109.7	120.2	117.8	106.0	118.2
September	109.7	120.2	115.0	105.9	118.2
October	109.6	120.2	115.0	106.9	118.2
November	109.8	120.2	114.6	107.3	118.2
December p	109.6	120.2	114.4	107.7	118.2
1996					
January p	109.2	120.2	114.4	108.2	118.2
February p	109.1	120.2	114.1	108.2	118.2
February p	109.1	120.2	114.1	108.2	118.2
March p	109.1	120.2	114.1	108.2	118.2

Reference: Price Index of Materials Used in Building Other Than House Building (6407.0)

Analysis of Table 6.1

Lambs slaughtered showed an increase of 24% from February 1996 to March 1996.

6.1 LIVESTOCK SLAUGHTERED

Period	Cattle		Total	Calves	Sheep	Lambs	Pigs
	Bulls, bullocks, steers	Cows, heifers					
'000							
Financial years							
1992-93	272	180	452	5	3 752	1 481	568
1993-94	271	168	439	4	2 952	1 553	550
1994-95	244	186	430	4	2 438	1 264	604
Months							
Feb 95	19	17	36	—	220	113	46
Mar 95	23	17	41	—	242	117	53
Apr 95	14	15	29	—	181	98	51
May 95	18	15	33	—	199	96	56
Jun 95	18	10	29	—	146	62	58
Jul 95	17	12	29	—	145	54	53
Aug 95	19	15	34	—	191	92	52
Sep 95	17	18	35	—	162	150	51
Oct 95	21	17	38	—	195	153	49
Nov 95	28	16	44	—	234	127	47
Dec 95	23	17	40	—	196	79	42
Jan 96	19	19	38	—	195	75	40
Feb 96	20	23	43	—	196	89	47
Mar 96	18	18	36	—	194	110	49

Reference: Livestock Products (7215.0)

6.2 MEAT PRODUCED

Period	Beef	Veal	Mutton	Lamb	Pigmeat
tonnes					
Financial years					
1992-93	100 196	303	76 921	23 395	33 562
1993-94	101 513	296	61 731	24 936	32 423
1994-95	97 140	287	47 776	18 955	37 109
Months					
Feb 95	8 267	22	4 320	1 831	2 717
Mar 95	9 373	25	4 728	1 718	3 233
Apr 95	6 498	17	3 484	1 484	3 379
May 95	7 333	16	3 829	1 425	3 730
Jun 95	6 182	14	2 794	867	3 839
Jul 95	6 151	17	2 779	963	3 323
Aug 95	7 515	19	3 822	1 609	3 227
Sep 95	7 872	16	3 094	2 494	3 144
Oct 95	9 292	16	3 875	2 438	3 013
Nov 95	10 283	17	4 539	2 070	2 888
Dec 95	9 066	17	3 926	1 200	2 524
Jan 96	8 359	16	3 919	1 323	2 497
Feb 96	9 719	14	3 851	1 581	2 909
Mar 96	8 153	11	3 839	1 954	3 009

Reference: Livestock Products (7215.0)

Analysis of Table 6.2

Meat production for February 1996 showed a decrease in all types except for lamb and pigmeat. Percentage increase for lambs was 24% and for pigmeat, 3.4%.

For more information regarding these tables, please contact Peter Hodgson on (09) 360 5180.

6.3 WOOL RECEIVALS¹ and LIVE SHEEP EXPORTS

Period	Receivals of taxable wool by brokers and dealers		Export of live sheep		
	bales	tonnes	Number 000	Gross Value \$000	Unit Value \$
Financial years					
1992-93	1 115 307	198 756	3 681.0	89 079	24.20
1993-94	1 196 990	212 670	4 520.9	127 448	28.19
1994-95	972 837	172 575	3 780.7	125 101	33.09
Months					
Feb 95	84 274	15 167	345.2	11 816	34.23
Mar 95	90 219	16 114	336.7	11 016	32.72
Apr 95 r	53 151	9 478	496.7	17 622	35.49
May 95	39 129	6 883	282.1	10 428	36.97
Jun 95	30 142	5 333	179.3	6 855	38.22
Jul 95	53 823	9 632	515.6	21 397	41.50
Aug 95	125 250	22 416	418.9	17 363	41.45
Sep 95	110 916	19 675	415.7	16 628	40.01
Oct 95	118 670	21 125	277.6	10 238	36.88
Nov 95	87 159	15 520	281.9	9 918	35.17
Dec 95	38 394	6 788	341.6	13 677	40.04
Jan 96	n.y.a.	11 147	354.2	13 921	39.30
Feb 96	n.y.a.	16 696 r	337.2	12 445	36.90
Mar 96	n.y.a.	15 518	520.1	19 758	37.99

¹ Source: National Council of Wool Selling Brokers

Reference: FTRACCS Trade Statistics

For more information regarding these tables, please contact Pam Prince on (09) 360 5207

6.4 ENERGY PRODUCTION

Period	Coal ¹	Electricity generated	Gas for distribution ²	Crude oil ^{3,4}	Natural gas ⁴
	000 tonnes	million kWh	million MJ	mega-litres	million m ³
Financial years					
1991-92	5 491	14 626	149 534	7 350	10 496
1992-93	5 428	15 007	156 349	6 693	11 923
1993-94	5 151	15 755	172 432	7 639	13 659
Months					
Mar 95	555	1 465	13 878	2 918	4 048
Apr 95	580	1 351	13 951		
May 95	518	1 423	14 466		
Jun 95	547	1 389	14 865	3 210	3 682
Jul 95	391	1 447	15 564		
Aug 95	368	1 455	15 474		
Sep 95	567	1 370	14 543	3 421	4 396
Oct 95	496	1 399	15 441		
Nov 95	455	1 394	14 709		
Dec 95	613	1 477	14 416	2 740	4 253
Jan 96	505	1 537	15 635		
Feb 96	445	1 532	15 707		
Mar 96	588	n.y.a.	n.y.a.	n.y.a.	n.y.a.

¹ Source: Department of Minerals and Energy.

² Available for issue through mains.

³ Includes condensate.

⁴ Source: Australian Bureau of Agricultural and Resource Economics.

6.5 MINERAL EXPLORATION: EXPENDITURE BY TYPE OF MINERAL SOUGHT

Analysis of Table 6.5

Overall mineral exploration expenditure for the September Quarter showed a return to normal levels of activity after the influence of the variations seen in the gold sector during the March and June Quarters.

For more information regarding these tables, please contact Pam Prince on (09) 360 5207.

Period	Metallic Minerals			Non-Metallic Minerals		Total minerals
	Base metals ¹	Gold	Other	Diamonds	Other	
	(\$ million)					
Financial years						
1992-93	60.0	221.2	35.0	29.0	2.9	348.1
1993-94	63.3	310.2	31.5	46.6	2.1	453.7
1994-95	58.8	379.4	17.9	35.2	5.6	495.5
Quarters						
Sep 94	13.0	94.3	5.5	14.0	0.7	127.5
Dec 94	14.5	97.4	4.9	9.4	0.3	126.4
Mar 95	17.2	79.5	3.4	5.1	0.6	106.3
June 95	14.1	108.2	4.0	5.8	0.6	135.3
Sep 95	16.6	90.4	4.5	9.7	2.4	124.9
Dec 95	n.y.a	n.y.a	n.a	n.a	n.a	n.y.a

¹ Includes copper, lead, zinc, silver, nickel and cobalt.

Reference: Actual and Expected Private Mineral Exploration Expenditure, Australia (B412.0)

6.6 MINERAL PRODUCTION

Period	Iron ore	Bauxite	Gold	Ilmenite	Nickel	Diamonds
	'000 tonnes	'000 tonnes	kg	'000 tonnes	'000 tonnes	'000 carats
Financial years						
1992-93	112 259	26 681	179 615	1 706	64	42 199
1993-94	119 690 r	27 087	193 599	1 612	62 r	39 909
1994-95	132 742 r	26 852	187 609 r	1 631 r	94	43 591
Quarters						
Sep 94	32 781	6 706	47 095	410	19	12 864
Dec 94	32 958	6 761	47 789	400 r	23	11 292
Mar 95	32 265	6 657	45 396 r	388 r	25	10 111
Jun 95	34 738 r	6 729	47 329 r	433 r	27	9 324
Sep 95	36 459	7 451	49 050 r	500 r	25	9 105 r
Dec 95	35 213	7 028	49 150	477	24	12 153

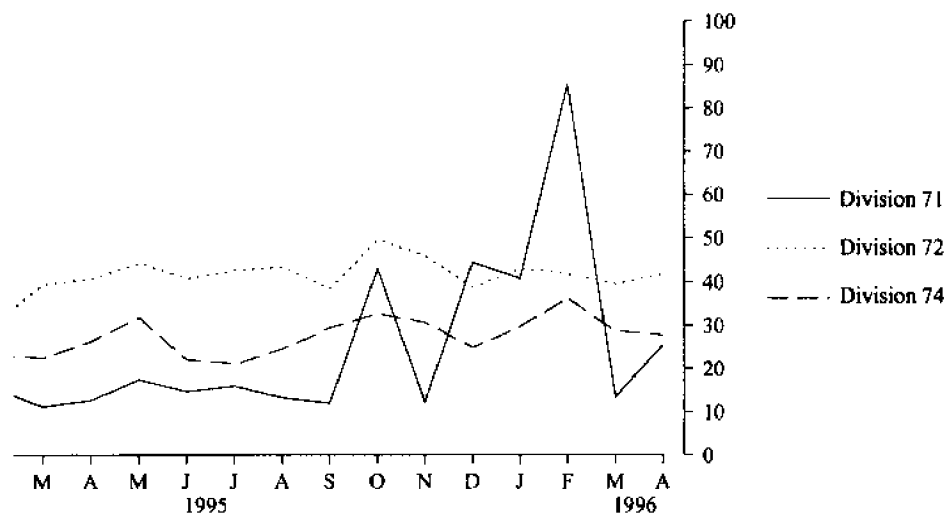
Source: Australian Bureau of Agricultural and Resource Economics

7.1 IMPORTS BY SELECTED DIVISION

Period	33 Petroleum, petroleum products, etc	71 Power generating equipment and machinery	72 Machinery specialised for particular industries	74 General industrial machinery and equipment	78 Road vehicles
(\$ million)					
Financial years					
1992-93	912.0	172.0	650.2	215.2	538.3
1993-94	678.4	189.7	432.2	254.0	690.0
1994-95	823.8	203.1	436.9	308.7	802.1
Months					
Feb 95	70.0	15.6	30.7	23.4	42.1
Mar 95	70.1	11.3	39.7	22.6	66.7
Apr 95	97.0	12.7	40.8	26.5	76.7
May 95	78.9	17.5	44.4	31.8	101.5
Jun 95	76.2	14.8	40.8	22.1	73.4
Jul 95	69.1	16.0	42.7	21.1	82.7
Aug 95	76.0	13.3	43.5	24.7	69.8
Sep 95	40.2	12.0	38.5	29.5	59.7
Oct 95	63.1	43.1	49.7	32.8	78.9
Nov 95	51.2	12.3	46.1	30.7	72.9
Dec 95	72.0	44.5	38.7	25.0	60.4
Jan 96	74.7	40.8	43.0	29.8	47.2
Feb 96	72.8	85.5	41.8	36.4	53.8
Mar 96	74.2	13.5	39.6	28.7	60.0
Apr 96	56.4	25.6	41.9	27.8	62.5

Reference: Fastraccs Trade Statistics

IMPORTS BY SELECTED DIVISION



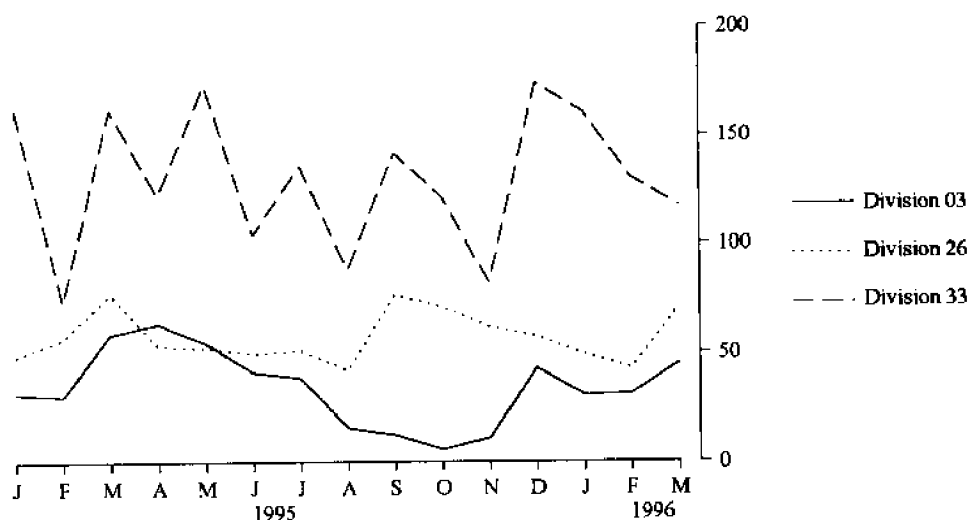
Source: Fastraccs Trade Statistics

7.2 EXPORTS BY SELECTED DIVISIONS

Period	03 Fish, crustaceans, molluscs, etc	04 Cereals and cereal preparations	26 Textile fibres and waste (excluding yarn or fabric)	28 Metaliferous ores and metal scrap	33 Petroleum, petroleum products etc.
	(\$ million)				
Financial years					
1992-93	359.0	1 294.9	611.4	3 261.1	967.0
1993-94	413.3	1 150.1	656.1	2 999.4	882.9
1994-95	408.6	1 154.3	733.8	3 094.0	1 544.4
Months					
Jan 95	31.5	71.9	48.4	242.2	162.0
Feb 95	30.3	117.2	56.7	216.4	72.7
Mar 95	58.8	134.3	77.0	295.6	161.7
Apr 95	63.3	79.8	53.0	235.6	121.9
May 95	54.7	122.0	52.0	328.4	173.5
Jun 95	40.8	81.7	49.7	328.5	103.6
Jul 95	38.6	82.5	51.0	242.2	135.9
Aug 95	15.3	89.5	41.9	320.9	87.9
Sep 95	12.2	114.7	76.2	263.8	141.6
Oct 95	5.6	123.5	70.7	271.0	121.3
Nov 95	10.5	164.9	61.8	269.8	81.9
Dec 95	42.7	209.6	57.2	274.3	174.0
Jan 96	30.4	213.7	49.2	246.0	160.6
Feb 96	31.1	197.6	42.8	233.6	130.3
Mar 96	45.1	185.3	70.8	275.5	117.5

Reference: Fastracks Trade Statistics

EXPORTS BY SELECTED DIVISIONS



Source: Fastracks Trade Statistics

8.1 NEW MOTOR VEHICLE REGISTRATIONS¹

Period	Western Australia					Perth Statistical Division
	Passenger vehicles	Light commercial vehicles	Trucks and buses	Motor cycles and scooters	Total	
Financial years						
1992-93	45 567	9 581	1 975	2 117	59 240	46 593
1993-94	48 589	10 350	2 136	2 103	63 178	49 074
1994-95	51 947	10 782	2 170	2 344	67 243	52 168
Months						
Feb 95	3 933	906	171	176	5 189	3 989
Mar 95	4 434	1 006	153	217	5 810	4 597
Apr 95	3 400	785	173	150	4 508	3 332
May 95	5 046	1 076	205	173	6 500	5 040
Jun 95	5 025	1 258	248	159	6 690	4 984
Jul 95	3 704	769	198	156	4 827	3 635
Aug 95	4 395	771	235	192	5 593	4 405
Sep 95	4 021	738	209	187	5 155	4 119
Oct 95	4 111	812	175	201	5 299	4 136
Nov 95	4 595	945	247	365	6 148	4 887
Dec 95	4 308	884	207	209	5 608	4 249
Jan 96	3 178	692	140	174	4 184	3 041
Feb 96	4 516	1 090	158	170	5 934	4 472
Mar 96	4 718	995	174	201	6 088	4 624

¹ Excludes plant and equipment, caravans and trailers
Reference: Unpublished statistics

Analysis of Table 8.2

The trend estimate has shown a steady increase of vehicle registrations from October 1995 to March 1996.

For more information regarding these tables, please contact Cheryl Smith on (09) 360 5242

8.2 VEHICLE REGISTRATION STATISTICS¹

Period	Passenger Vehicles		Other Vehicles		Total	
	Original	Trend estimate	Original	Trend estimate	Original	Trend estimate
Months						
Feb 95	3 933	4 306	1 077	1 081	5 010	5 387
Mar 95	4 434	4 341	1 159	1 087	5 593	5 428
Apr 95	3 400	4 376	958	1 099	4 358	5 475
May 95	5 046	4 381	1 281	1 110	6 327	5 491
Jun 95	5 025	4 340	1 270	1 114	6 531	5 454
Jul 95	3 704	4 284	967	1 108	4 671	5 392
Aug 95	4 395	4 213	1 006	1 090	5 401	5 303
Sep 95	4 021	4 128 r	947	1 067	4 968	5 195 r
Oct 95	4 111	4 080 r	987	1 053 r	5 098	5 133 r
Nov 95	4 595	4 094 r	1 192	1 058	5 787	5 152 r
Dec 95	4 308	4 136 r	1 091	1 075 r	5 399	5 211 r
Jan 96	3 178	4 187 r	832	1 095 r	4 010	5 282 r
Feb 96	4 516	4 256 r	1 248	1 114 r	5 764	5 370 r
Mar 96	4 718	4 337	1 169	1 131	5 887	5 468

¹ Other vehicles excludes motor cycles, plant and equipment, caravans and trailers.
Reference: Unpublished statistics

9.1 PRIVATE NEW CAPITAL EXPENDITURE BY SELECTED INDUSTRY GROUPS (ORIGINAL SERIES)

Period	Selected Industry			Total	Seasonally adjusted
	Mining	Manu- facturing	Other selected industries	Original	
(\$ million)					
Financial Years					
1993-94	3 624	517	1 813	5 954	5 923
1994-95	4 046	595	2 216	6 857	6 819
Quarters					
Sep 94	840	98	383	1 321	1 341
Dec 94	1 172	154	894	2 220	1 950
Mar 95	1 007	133	452	1 592	1 770
Jun 95	1 027	209	487	1 724	1 757
Sep 95	1 041	205	577	1 823	1 877
Dec 95	1 163	176	766	2 106	1 828

Reference: State Estimates of Private New Capital Expenditure (5648.0)

9.2 STATE FINAL DEMAND AND PRODUCTION ACCOUNT TREND DATA AT CURRENT PRICES

Analysis of Table 9.2

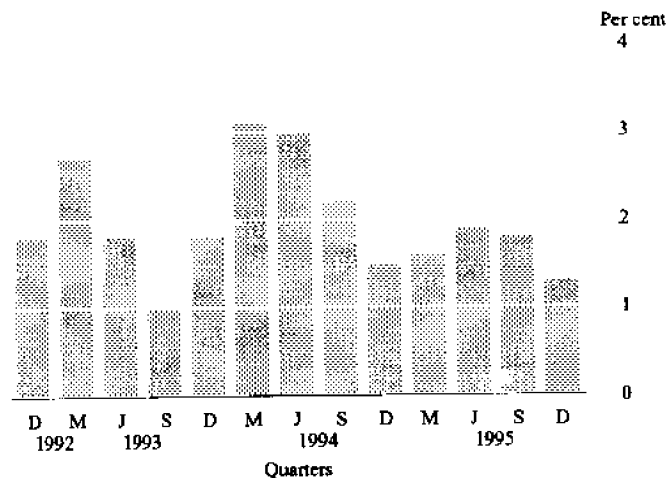
GSP grew 1.3% in the December quarter, to be 6.4% higher than in December quarter 1994. Growth in wages, salaries and supplements has remained steady, rising 1.2% in the December quarter. Indirect taxes less subsidies grew 3.9% in the December quarter, after similarly strong growth of 3.4% in September quarter 1995.

For more information about this table, call Vic Nowotny (09) 360 5333

Period	Wages salaries and supplements	Gross operating surplus	Indirect taxes less subsidies	GSP (income based)
(\$ million)				
Quarters				
Jun 93	4 729	4 839	1 104	10 672
Sep 93	4 866	4 872	1 134	10 872
Dec 93	4 971	4 930	1 183	11 084
Mar 94	5 024	5 036	1 246	11 306
Jun 94	5 052	5 157	1 298	11 507
Sep 94	5 089	5 210	1 328	11 627
Dec 94	5 159	5 215	1 327	11 701
Mar 95	5 264	5 291	1 319	11 874
Jun 95	5 348	5 398	1 335	12 081
Sep 95	5 414	5 494	1 380	12 288
Dec 95	5 477	5 537	1 434	12 448

Reference: State Accounts (5242.0)

PERCENTAGE CHANGE IN GSP(A) - TREND
WESTERN AUSTRALIA



(A) Gross State Product at current prices
Source: State Accounts 5242.0

10.1 STATISTICAL SUMMARY

Indicator	Period	Unit	Western Australia		Change from last period(%)	Figure one year ago	Change from one year ago (%)
			Current Australian figure	Current figure			
POPULATION							
Estimated resident population	Sep qtr 95 p	'000	18 114.4	1 740.1	0.5	1 709	1.8
Natural increase	Sep qtr 95 p	No.	29 319	3 399	-9.5	3 438	-1.1
Net estimated migration gain	Sep qtr 95 p	No.	31 092	4 949	32.8	4 521	9.5
TOURISM							
<i>Hotels and motels, etc with facilities</i>							
Guest arrivals	Dec qtr 95	'000	7 964.4	594.9	1.0	579.3	2.7
Guest rooms available	Dec qtr 95	No.	169 630	14 924	1.4	14 734	1.3
Room occupancy rates	Dec qtr 95	%	59.7	62.2	1.8	61.2	1.6
<i>Overseas visitors</i>							
Long-term Arrivals	Dec qtr 95	No.	13 300	1 440	-45.5	1 160	24.1
Short-term Arrivals	Dec qtr 95	No.	1 085 800	110 800	49.7	106 200	4.3
<i>Resident Departures</i>							
Long-term Departures	Dec qtr 95	No.	14 600	1 610	-8.5	1 590	1.3
Short-term Departures	Dec qtr 95	No.	674 700	81 200	-1.9	76 900	5.6
EMPLOYMENT							
Employed persons (Trend)	Apr 96	'000	8 304.6	828.3	0.0	829.3	-0.1
<i>Unemployed persons</i>							
Looking for work (Original)	Apr 96	'000	793.0	64.0	-13.5	66.1	-3.2
Looking for work (Trend)	Apr 96	'000	783.0	68.1	-1.0	66.4	2.6
<i>Participation rate</i>							
Original	Apr 96	%	63.4	65.2	-1.8	67.6	-3.6
Trend	Apr 96	%	63.5	65.7	-0.8	67.1	-2.1
<i>Unemployment rate</i>							
Original	Apr 96	%	8.7	7.2	-12.2	7.3	-1.4
Trend	Apr 96	%	8.6	7.6	-1.3	7.4	0.3
<i>Full-time adult average weekly earnings</i>							
Males	Nov 95	\$	761.60	792.20	2.1	758	4.5
Females	Nov 95	\$	596.00	574.40	1.0	538	6.7
Persons	Nov 95	\$	702.90	713.10	1.5	677	5.4
All employees total earnings	Nov 95	\$	554.30	548.40	0.7	539	1.8
<i>Average weekly overtime hours</i>							
Per employee	Nov 95	hours	1.1	1.3	4.3	1.7	-21.3
Per employee working overtime	Nov 95	hours	6.9	8.2	2.4	8.5	-4.5
Employees working overtime	Nov 95	%	16.6	16.4	1.8	19.9	-17.6
<i>Industrial disputes in progress (working days lost)</i>							
Total	Feb 96	'000	44.9	3.9	-68.5	2.5	56.0
Per '000 employees year ended	Feb 96	days	79.0	168.0	1.2	44.0	281.8
RETAIL							
<i>Monthly Retail Turnover</i>							
Original	Mar 96	\$m	9 831.9	992.7	3.2	922.0	7.7
Trend estimate	Mar 96	\$m	10 240.7	1 048.5	0.4	950.6	10.3
Consumer Price Index	Mar qtr 96	Index No.	119.0	117.1	0.7	113.0	3.6

10.1 STATISTICAL SUMMARY continued

Indicator	Period	Unit	Western Australia				
			Current Australian figure	Current figure	Change from last period (%)	Figure one year ago	Change from one year ago (%)
CONSTRUCTION							
<i>Building Approvals</i>							
Dwelling Units	Mar 96	No.	10 163	1 501	1.3	1 761	-14.8
Value of all building	Mar 96	\$m	1 894.6	210.0	9.6	215.5	-2.6
<i>Building Commencements</i>							
Dwelling Units	Jun qtr 95	No.	35 647	4,642	-5.1	6 744.0	-31.2
Value of all building	Jun qtr 95	\$m	6 040.6	653.2	5.8	731.4	-10.7
<i>Total Building</i>							
Value of work done during	Jun qtr 95	\$m	5 995.1	669.7	-3.8	750.9	-10.8
Value of work yet to be done	Jun qtr 95	\$m	7 916.6	642.2	-0.7	734.9	-12.6
<i>Engineering Construction</i>							
Value of work commenced	Sep qtr 95	\$m	5 076.4	947.4	93.5	365.6	159.0
Value of work done during	Sep qtr 95	\$m	3 312.7	511.3	7.0	341.4	50.0
Value of work yet to be done	Sep qtr 95	\$m	6 315.4	1 177.8	11.9	775.7	51.9
<i>Housing Price Indexes</i>							
Materials used in house building	Dec qtr 95	Index No.	115.7	114.9	-0.1	112.1	2.5
Established houses	Dec qtr 95	Index No.	112.4	108.3	-0.3	109.1	-0.7
Project Homes	Dec qtr 95	Index No	109.4	101.6	-0.6	99.6	2.0
MINERAL EXPLORATION							
Gold	Sep qtr 95	\$m	128.5	90.4	-16.4	94.3	-4.1
Other minerals	Sep qtr 95	\$m	94.4	34.5	27.3	33.2	3.9
OVERSEAS TRADE							
Imports	Apr 96	\$m	6 455.5	479.2	-2.4	493.3	-2.8
Exports	Apr 96	\$m	6 354.3	1 622.0	5.6	1 627.1	-0.3
TRANSPORT							
<i>Passenger vehicle registrations</i>							
Original	Mar 96	No.	45 597	4 718	4.5	4 434.0	6.4
Trend	Mar 96	No.	45 110	4 337	5.3	4 341.0	-0.1
<i>Total registrations</i>							
Original	Mar 96	No.	54 783	5 887	2.1	5 593.0	5.3
Trend	Mar 96	No.	54 173	5 468	4.4	5 428.0	0.7
FINANCE							
<i>Private New Capital Expenditure</i>							
Original	Dec qtr 95	\$m	9 758	2 106	15.5	2 220	-5.1
Seasonally adjusted	Dec qtr 95	\$m	9 013	1 828	-2.6	1 950	-6.3
<i>Gross State Product (Income based)</i>							
Current prices	Dec qtr 95	\$m	127 092	14 046	17.4	13 113	7.1
State Final Demand at average 1989-90 prices	Dec qtr 95	\$m	110 711	11 450	9.9	11 062	3.5

For more information...

The ABS publishes a wide range of information on Australia's economic and social conditions. Details of what is available in various publications and other products can be found in the *ABS Catalogue of Publications and Products* which is available from any of our Offices (see below for contact details).

ABS Products and Services

Many standard products are available from ABS Bookshops located in each State and Territory. In addition to these products, information tailored to special needs of clients or in-depth data investigations can be obtained on a wide range of media by contacting the ABS Information Consultancy Services in your nearest ABS office.

National Dial-a-Statistic Line

0055 86 400

(Steadycom P/L premium rate 25c/21.4 secs.)

This number gives 24 hours access, 365 days a year for a range of important economic statistics, including the CPI.

Internet

<http://www.statistics.gov.au>

A wide range of ABS information is available via the Internet, with basic statistics available for each State, Territory and Australia. We also have Key National Indicators, ABS product release details and other information of general interest.

Bookshops and Subscriptions

There are now over 500 titles available from the ABS Bookshops in each of our Offices. The ABS also provides a subscription mailing service through which nominated publications are provided by mail at no additional cost. (Telephone Publications Subscription Service toll free on 008 02 0608 Australia wide).

Sales and Inquiries

Regional Offices	Information Enquiries	Bookshop Sales
SYDNEY	(02) 268 4611	268 4620
MELBOURNE	(03) 9615 7000	9615 7829
BRISBANE	(07) 3222 6531	3222 6350
PERTH	(09) 360 5140	360 5140
ADELAIDE	(08) 237 7100	237 7582
HOBART	(002) 20 5800	20 5800
CANBERRA	(06) 207 0326	207 0326
DARWIN	(089) 43 2111	43 2111
National Office		
ACT	(06)252 6007	008 020 608



**Information Services, Exchange Plaza,
2 The Esplanade, Perth WA 6000.
or any ABS Office**



© Commonwealth of Australia 1996

Recommended retail price: \$15.00



2130550005960
ISSN 0727-2367